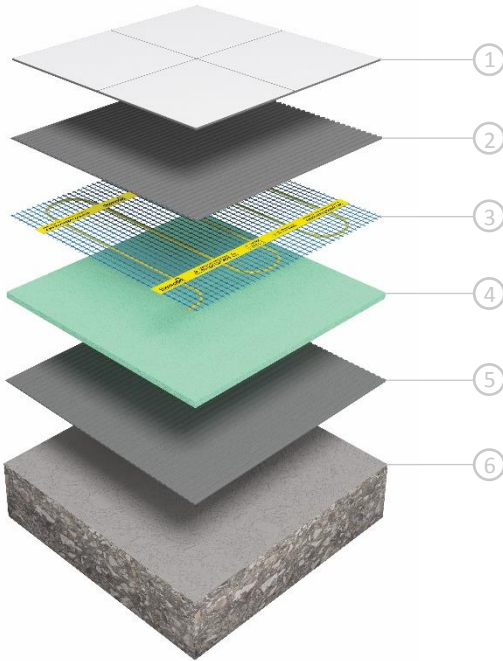


# Thermonet 150W/m<sup>2</sup> TD Kits

For Installation Under Tile & Stone Floors



1. Tiled floor finish
2. Flexible tile adhesive
3. Thermonet 150W/m<sup>2</sup> heating mat
4. Econoboard uncoated insulation board
5. Flexible tile adhesive
6. Concrete substrate



**Lifetime Warranty**

We are so confident of the quality of our German-made Thermonet Underfloor Heating that we give each system a warranty that lasts a Lifetime with 3 year warranty on our Thermostats.



**TwistedTwin cable construction**

The unique stress free cable construction creates a longer lasting heating cable with zero electromagnetic field (Zero EMF).



**Full self adhesive mesh**

The self adhesive mesh speeds up installation by holding Thermonet matting to the substrate for easy self levelling and tile fixing.



**Heating cable protection**

Thermonet is installed wire-side-down which means the heating cable is protected from damage during installation by the hard wearing mesh layer.



**Minimal Height Build-up**

Utilising innovative extrusion processes provides real 'lay flat' technology that makes installing Thermonet easy. The matting system is only 3.5mm thick with a low profile cold tail of only 4mm thick which is typically concealed within the tile adhesive layer.

## Technical Data



**Kit Includes:** Thermonet 150W/m<sup>2</sup> Mat, Dual Control Thermostat (5245), Floor Temperature Sensor, Sensor Conduit, Cable Monitor, Installation Guide & Warranty Form.

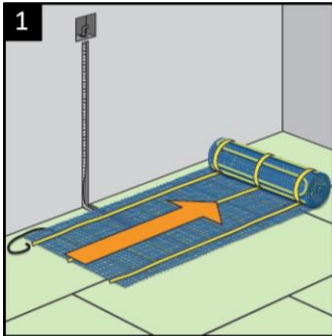
Width	500mm
Heated Width	430mm
Thickness	3.5mm
Max. Temperature	28°C *
Protection Rating	IP68
Warranty	Lifetime on heating mat
Wattage	150W/m <sup>2</sup>
Conductor Type	Single Ended
Cold Tail Length	5m

\*Regulated by floor sensing thermostat

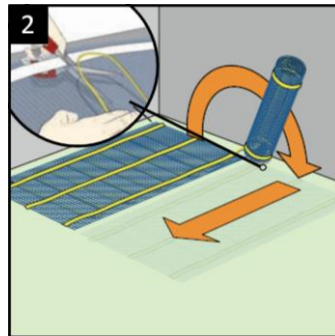


### Installation Overview

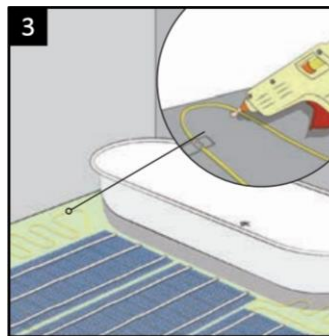
Thermonet electric underfloor heating mat is quick and easy to install. This overview gives a guide to the basics. Always read the instructions in full before attempting your own installation.



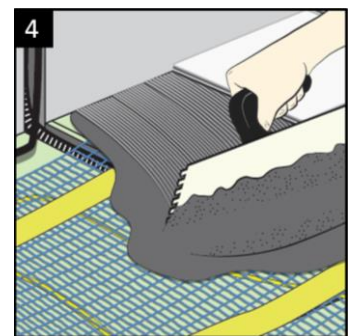
**1 Roll out the mesh**  
The mesh should be laid wire side down



**2 Cut the mesh (not the cable)**  
Turn the mesh 180° and continue rolling



**3 Loose run for irregular areas**  
Remove the cable from the mesh, arrange and stick down



**4 Laying the tiles**  
Use a flexible tile adhesive to fix tiles straight over the heating

This is an illustrative guide only. Read the instruction manual that is supplied with the system in full before attempting installation.

### Thermonet Mesh 150W/m<sup>2</sup> TD Kits

Stock Code	Size (m)	Area (m <sup>2</sup> )	Output (W)	Resistance (Ω)
111502TD	2 x 0.5	1.0	150	353
111503TD	3 x 0.5	1.5	225	235
111504TD	4 x 0.5	2.0	300	176
111505TD	5 x 0.5	2.5	375	141
111506TD	6 x 0.5	3.0	450	118
111507TD	7 x 0.5	3.5	525	101
111508TD	8 x 0.5	4.0	600	88
111509TD	9 x 0.5	4.5	675	78
111510TD	10 x 0.5	5.0	750	71
111512TD	12 x 0.5	6.0	900	59
111514TD	14 x 0.5	7.0	1050	50
111516TD	16 x 0.5	8.0	1200	44
111518TD	18 x 0.5	9.0	1350	39
111520TD	20 x 0.5	10.0	1500	35
111524TD	24 x 0.5	12.0	1800	29
111528TD	28 x 0.5	14.0	2100	25
111532TD	32 x 0.5	16.0	2400	22



An underfloor heating thermostat that can control your electric underfloor heating system and an extra appliance

Thermotouch 4.3dC has been redesigned with bathrooms in mind and can be installed in a portrait or landscape orientation, with 8 screen colour settings to choose from



Control your underfloor heating and appliance (towel rail or mirror demister) from the same thermostat



Built in ambient temperature sensor and external floor sensor for accurate temperature management



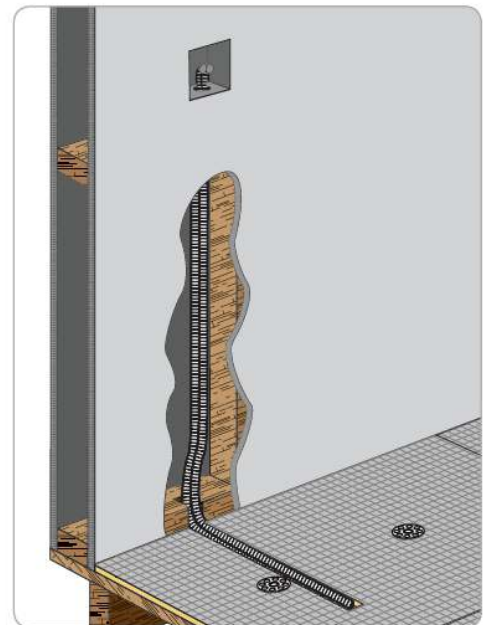
Customise your thermostat with a choice of portrait or landscape mode and 8 different colour screen settings



Design an economical heating schedule for your underfloor heating and copy to your towel rail or mirror demister



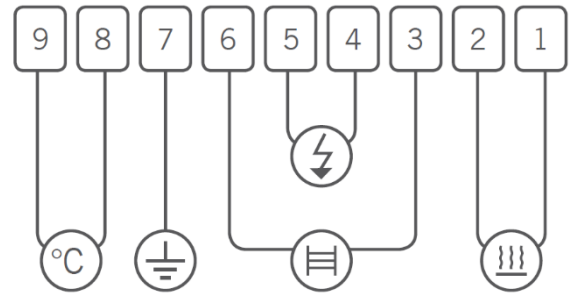
Manually boost your underfloor heating and towel rail until the next heating event or for 1, 2 or 4 hours



Floor temperature sensor should be installed in a conduit, within a clear area of the floor, and away from any other temperature influences.

## Wiring diagram

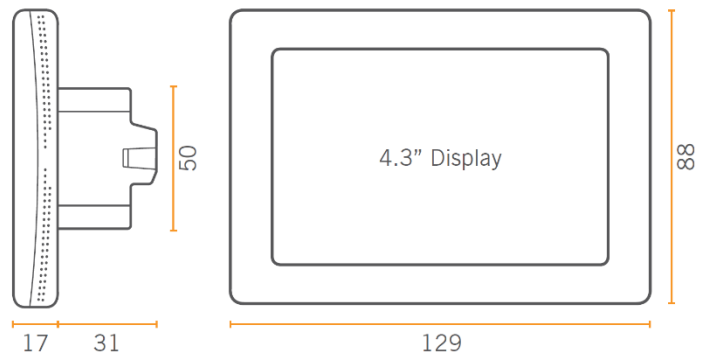
1. Live – Underfloor heating
2. Neutral – Underfloor heating
3. Neutral – Secondary relay (for towel rail or demister)
4. Neutral – 240V supply
5. Live – 240V supply
6. Live – Secondary relay (for towel rail or demister)
7. Earth - Common
8. Floor sensor (not polarity sensitive)
9. Floor sensor (not polarity sensitive)



## Box contents

## Dimensions (mm)

- 1 x Thermotouch 4.3dC
- 1 x Installation guide
- 1 x 3m floor temperature sensor probe
- 1 x 2m sensor conduit
- 2 x Fixing screws



## Technical data

Supply voltage	240V 50/60Hz
Maximum load	16A (20A combined)
UFH relay	16A (3600W)
Appliance relay	5A (1125W)
Temperature range	5 ~ 35°C
Ambient	0 ~ 50°C
Compatible sensors	6.8kΩ, 10kΩ, 12kΩ, 15kΩ, 33kΩ (@ 25°C)
Accuracy	± 0.5°C
Warranty	3 year
IP rating	IP30
Width	129mm
Height	88mm
Depth	48mm (31mm in wall)